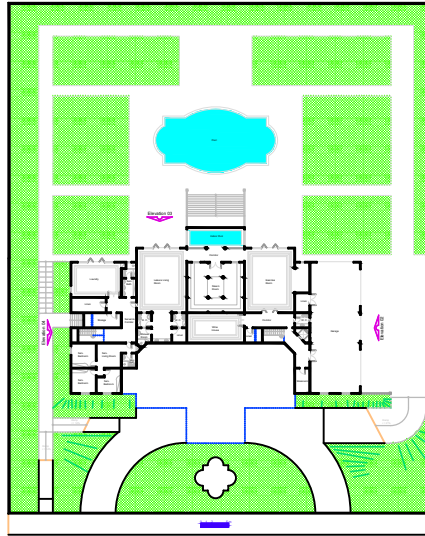
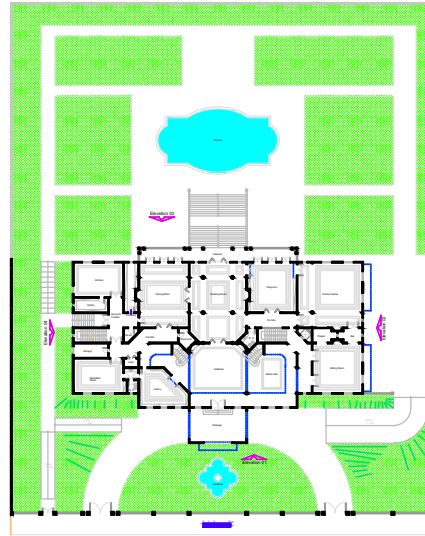


Roof Plan

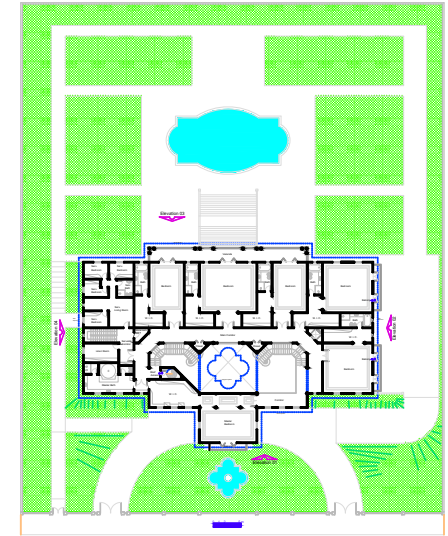


Lower Floor Plan  
A = 672,54 m<sup>2</sup>

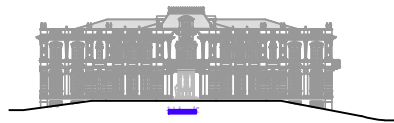
Total Area = 2370,46 m<sup>2</sup>



First Floor Plan  
A = 951,37 m<sup>2</sup>



Second Floor Plan  
A = 795,69 m<sup>2</sup>



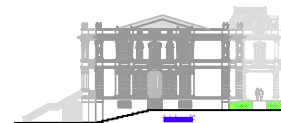
Elevation 01



Elevation 02



Elevation 03



Elevation 04